

COMMUNITY RUGBY INJURY SURVEILLANCE PROJECT ROADMAP: ADULT TEAMS

1

PRESEASON



INITIAL CONTACT

You will be contacted by UoB Researchers who will provide your club with information on the project and a link to register your interest for your team to take part.

2

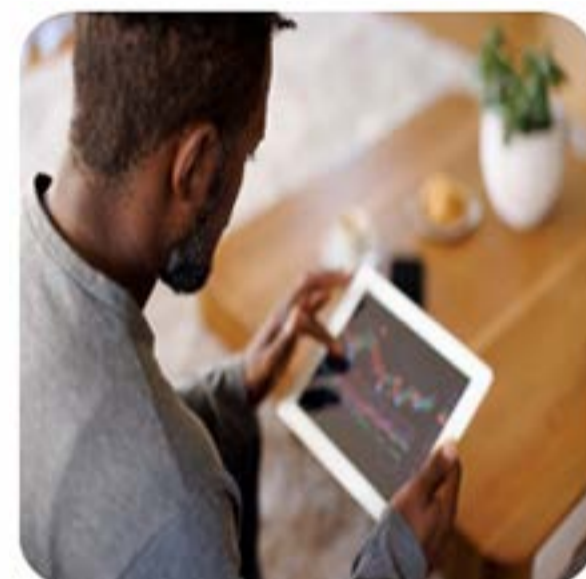


CONNECT

Research team connects with your nominated team project coordinator to provide more detailed project information and ensure that they understand the projects requirements.

3

START OF SEASON



DATA COLLECTION

Your team project coordinator will be sent data collection resources and guides on how to use them. The research team provide a consent form link to the team project coordinator to distribute to players at the start of season.

4

DURING SEASON



RECORD DATA

Team project coordinator records match information and injury data throughout the season. The research team will be available over the season to provide support as needed.

5

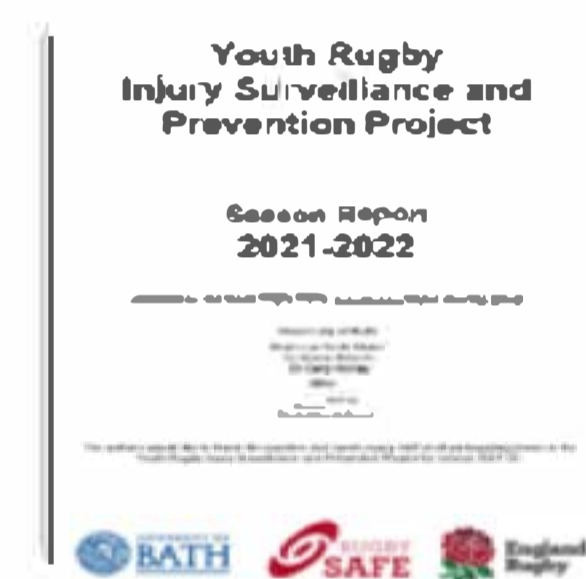
END OF SEASON



FINALISE DATA

Final collection of remaining data at end of season by team project coordinator. Research team verifies data collected, including checking consents have been received.

6



FEEDBACK

Project season report will be written by the research team which highlights findings from the season. Teams providing complete data may request a report that compares their team's data to the national data.



ASK US ABOUT OUR INFORMATION WEBINARS

This project has been granted favourable approval from the University of Bath. For further details please contact the University of Bath adult community injury surveillance research team: rfu-crisp@bath.ac.uk